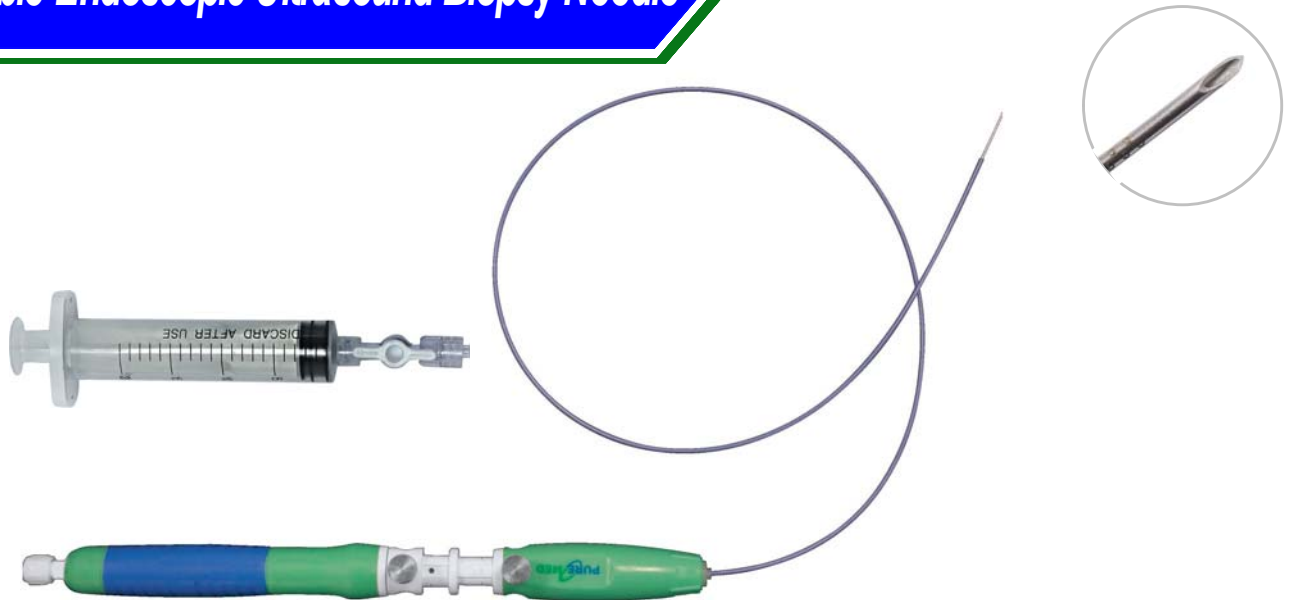


Disposable Endoscopic Ultrasound Biopsy Needle



Product Characteristics:

- a. Smooth in and out of the sheath;
- b. High-performance stainless steel material for flexibility and durability;
- c. Dual knob design for safe and reliable control, and Nitinol core wire for convenient clinical support
- d. Strong needle echo on ultrasound system;
- e. Reverse beveled needle tip design beneficial for easy sample collection;
- f. The product is compatible with the mainstream ultrasound endoscopes for the gastrointestinal system in the market.

Utilization Range:

Used for biopsy sampling under the ultrasound system on histology and cytology procedure.

Specification:

REF	Needle size	Outer sheath diameter(mm)	Effective length (mm)	Minimum channel size(mm)
AEF/S251814	25G	1.6	1400	≥Ø2.8
AEF/S221814	22G	1.8	1400	
AEF/S191814	19G	1.8	1400	